

IT Outstaffing

Expertise Overview

Our Company

SoftTeco LLC is an international software development company that delivers custom end-to-end enterprise solutions to clients across the globe. To ensure that we precisely meet your most elaborate technical needs, we provide IT outstaffing services that cover full-cycle software development, QA, Machine Learning, DevOps, Salesforce, and UX/UI design. By partnering with SoftTeco, you get access to top talents in the industry that are ready to bring their knowledge and expertise to your project.



2008

Founded



500+

Employees



300+

Customers Worldwide



450+

Successful Projects

With a proven track record of successful projects and with clients in over 75 countries, SoftTeco is a trusted and well-recognized provider of IT outstaffing services. We are proud to be working with such a diverse team of talented individuals and we invite you to tap into endless digitization opportunities together with SoftTeco.

Benefits

Optimization of IT costs



Quick project launch
and fast time-to-market



Easy team scaling
upon the request



Access to top tech
talents in the industry



High level of expertise



Access to a great variety
of technologies





1 Requirements solicitation

First, we collect and analyze the requirements for the project to gain a solid understanding of your vision and expectations.



2 Internal selection

We perform internal meetings to select the candidates that would be the most suitable fit for the project and its technical requirements.



3 CV Review

Once we find the right software engineers and are confident in their skills, we will send you their CVs for the review



4 Screening process

We conduct as many interviews between you and our developers as needed, so you select the most suitable professionals.



5 Testing period

During the testing period, we maintain constant communication with the client to quickly add or remove developers from the team.



6 Feedback collection

We always collect feedback on the quality of work of our software developers, as clients' reviews help us constantly improve and calculate the retention rate of our employees.

Core Competencies

Backend Development

Java: JavaEE, Spring, Hibernate

.Net: C#, .Net Core, ASP.Net MAUI, Xamarin, WPF, ML.Net

PHP: Laravel, Yii2, Symfony2, Foundation, Drupal, WordPress

Node.js

Go

Ruby

Scala

Erlang

Databases: PostgreSQL, MySQL, Oracle Database, MSSQL, SQLite, MongoDB, DynamoDB, Redis, Cosmos DB

Frontend Development

HTML, CSS, JavaScript, TypeScript, React, Angular, AngularJS, Vue, Ember, Electron, Rust, Dart, NextJS, Redux

Mobile Development

iOS: Swift, ObjectiveC

Android: Kotlin, Java, NDK

Cross Platform/Hybrid: React Native, Xamarin, Flutter, Ionic, Apache Cordova

Data Engineering

BigQuery, Redshift, Snowflake, Clickhouse, ArangoDB, Apache Spark, Apache Airflow, Apache Superset, PowerBI, Tableau

Machine Learning

Python, R, Tensorflow, pyTorch, pandas/numpy, OpenCV

Salesforce

Apex, Sales Cloud, Service Cloud, Marketing Cloud

DevOps

Cloud Solutions: Amazon Web Services, Azure, Google Cloud, Digital Ocean

Containerization: Docker, Kubernetes

Monitoring: Grafana, Prometheus, Loki, ELK, Zabbix

QA Automation

Selenium, Selendroid, Cypress, Jenkins, Appium

Our Clients



Case Study

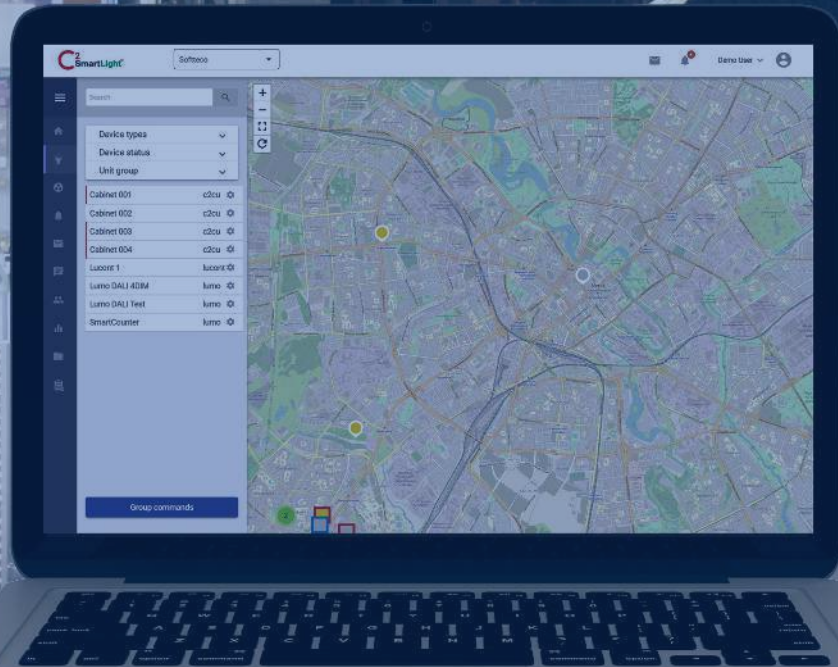
C2 SmartLight

A system for managing smart outdoor lighting solutions: streets, sites, stadiums, etc.

Project Overview

A Finnish tech company specializing in smart outdoor lighting solutions needed a web application with modern UI for controlling the lighting devices, communicating with the engineers, and storing logs and devices' maintenance history. SoftTeco's five skilled developers have worked on a solution for two years. The app allows users to monitor and control devices' status, including motion sensors. It facilitates automatic controlling of lighting based on user needs, enhances the lighting experience, reduces light pollution, and improves safety. Throughout this project, we reached a 95% staff retention rate.

- Various operating modes (manual, automatic, scheduled, astronomical clock, etc.)
- An option to manage devices dimming level
- Remote triggering of devices operations
- Detection and managing motion sensors and their connection to lighting devices



United States



 **Headquarters**

Kaunas, Lithuania

Laisves al. 82, Kaunas, 44250,
Lithuania

